

J K INDUSTRIES

Product Catalogue

Index:

1. The Pioneer of Specialty Dental Wax:	3	Waxes for Crown, Bridges – Export Quality:	
2. About Us	4	20. Ivory Mokup / Pattern wax	22
3. Quality	5	21. Milky Orange Wax	23
4. Infrastructure	6	22. Sky Blue Wax	24
5. Privacy Statement	7	23. White Mokup wax	25
6. Terms and Conditions	8	Waxes Used in Dentistry:	
7. Product	9	24. Beading Wax	26
Waxes for Crown, Bridges & Dentures:		25. Boxing Wax	27
8. Alu Wax	10	26. Carving Wax	28
9. Blue Inlay wax (Regular)	11	27. Green casting sheets	29
10. Coffee (ceramic) wax	12	28. Spacer Wax	30
11. Green pattern wax	13	Materials used before and after wax up:	
12. Margin wax (Brown/Green/Red)	14	29. Ceramic separator	31
13. Modeling wax	15	30. Debubbler	32
14. Orange pattern wax	16	31. Die hardener	33
15. Red pattern wax (Regular)	17	32. Die spacer	34
16. Sprue wax (Blue /Green/Yellow)	18	33. Wax separator	35
17. Sticky wax	19	Material Used after Metal Finish:	
18. Undercut Wax (Red/Green/Org)	20	34. Metal opaque 10	36
19. Yellow dipping wax	21	35. Contact Us	37
		36. Thank You	38

The Pioneer of Specialty Dental Wax:

- ▶ Welcome to J K INDUSTRIES - We are professional manufacturers of the highest quality products. Since 2001 we continue to develop unique waxes for dentists, dental labs, dental college class work.
- ▶ We are professional manufacturers of the highest quality products. Since 2001 we continue to develop unique waxes for dentists, dental laboratories, dental college class work. At J K Industries our waxes are of the highest quality. They are very easy to work with. There is a 100% burn out. Special care is taken to ensure you receive our best in every order. No order is large or small for us. We are the home off, Modeling Wax, Blue Inlay Wax (Regular), Orange Wax (Regular), Coffee (Ceramic) Wax, Red Margin Wax, Green Casting Sheet Wax, Green Wax, White Mokup Wax, Ivory Mokup & Pattern Wax, Sprue waxes sizes 2mm, 2.5mm, 3mm, 3.5mm, 4.0mm, 5.0mm, also available export quality waxes Die hardener, Wax Separator, Die Spacer (Silver / Golden / Red / Blue), Ceramic Separator, Boxing Wax, Beading Wax, Spacer Wax, Debubblizer, Metal Opaque etc. You can order colors of your liking. Our wax is excellent from build up and fabricating all types of patterns. It has very low shrinkage up to 99.99 % from wax up to burn out, and is very easy to carve with no braking or chipping. It resist war page and change in detail.....

About Us:

- ▶ The Company has ventured into the field of dentistry since 2001. With Team work & focus on RRR strategy

RELIABLE – RESPONSIBLE – REASONABLE

- ▶ At present, we have more than 25 Products in hand and many in pipe line. Company has become one of the leading suppliers in Domestic & well-known in the market. The strong relationship and the trust of consumers, trade and the dental profession built over the decade of operations in India has made J K Industries a trusted name.
- ▶ Our products have the repo of
“RIGHT QUALITY AT RIGHT PRICE”
in the market.
- ▶ Our manufacturing standard helps us to deliver quality dentistry products at affordable rates to masses.
- ▶ Our goal is to build confident relationship with our customers.
- ▶ Manufacturing and Marketing range of dental products, covering three major areas namely.
 1. Dental Laboratories
 2. Dentists
 3. Dental institutes

Quality:

- ▶ Our products are manufactured under the supervision of skilled professionals who are experts in their fields. Utmost Care, use of the latest technology available and stringent quality tests in order to produce flawless products comparable to international standards. Our Quality control has straight quality standards which covers the array of manufacturing process right from raw material procurement to final product inspection before dispatch.

Infrastructure:

- ▶ The Company has got customized machineries and facilities for optimizing production levels of manufactured products and thereby stands in a position of supplying in bulk to various working brands in India & abroad.

Privacy Statement:

- ▶ For each visitor to our Web page, our Web server automatically recognizes no information regarding the domain or e-mail address. We collect the e-mail address of those who communicate with us via e-mail, aggregate information on what pages consumers access or visit, user specific information on what pages consumer access or visit and information volunteered by the consumer, such as survey information and / or site registrations.
- ▶ The information we collect is used for internal review and is then discarded, used to improve the content of our Web page, used to customize the content and/or layout of our page for individual consumer and used by us to contact consumers for marketing purposes.
- ▶ If you do not want to receive e-mail from us in the future, please let us know by sending an e-mail, calling or writing, and telling us that you do not want to receive e-mail from our company.

Terms of Use Statement:

- ▶ You understand and agree that the owners of the site www.jkindustries.org.in shall not be liable for any direct, indirect, incidental, consequential or exemplary damages, including but not limited to, damages for loss of profits, data or other intangible losses (even if the owners of this site have been advised of the possibility of such damages), resulting from the use or the inability to use the product(s) and or service(s) or any misuse of the product(s) and or service(s) in a manner not in accordance with their intended use.

Products:

▶ Waxes for Crown, Bridges & Dentures:

- Alu Wax : For bite restoration
- Modeling wax : For denture works
- Blue Inlay wax (Regular): For making crown
- Orange pattern wax: For making crown
- Red pattern wax : For making crown
- Green pattern wax : For making crown
- Coffee (ceramic) wax: For ceramic jobs, gauge made up to 0.4mm
- Sticky wax : To join long bridges to avoid bending
- Yellow dipping wax: For dipping jobs
- Margin wax : To fill margin to avoid shrinkage
- Undercut Wax : Used to fill undercuts
- Sprue wax : As a pin to flow metal

▶ Waxes for Crown, Bridges (EXPORT QUALITY):

- White Mokup wax : For mokup jobs
- Ivory Mokup / Pattern wax: For making crown / mokup jobs
- Sky Blue Export Quality Wax: For making crown & bridges
- Milky Orange Wax : For making crown & bridges

▶ Waxes Use in Dentistry:

- Beading Wax : For use in dentistry
- Boxing Wax : For use in dentistry
- Carving Wax : For use in dentistry
- Green casting sheets: For casting jobs
- Spacer Wax : To create space in denture works

▶ Materials used before and after wax up:

- Die hardener : For hardening the model
- Die spacer : To create space between Model & Crown
- Wax separator : For separating wax from model
- Ceramic separator : To avoid dentin to stick on model
- Dibubbliizer : To avoid bubbles

▶ Material Used after Metal Finish:

- Metal opaque 10 : For opaque purpose
- Metal opaque 11 : For opaque purpose
- Metal opaque 12 : For opaque purpose

Waxes for Crown, Bridges & Dentures:

ALU WAX:

- ▶ Use:
 - For bite restoration
- ▶ Properties & Advantages:
 - It is sticky enough to easily adapt at the periphery or edge of alginate impression by hand pressure.
- ▶ Packaging:
 - 250 gm X 1 = 250 gm



Waxes for Crown, Bridges & Dentures:

BLUE INLAY WAX (R):

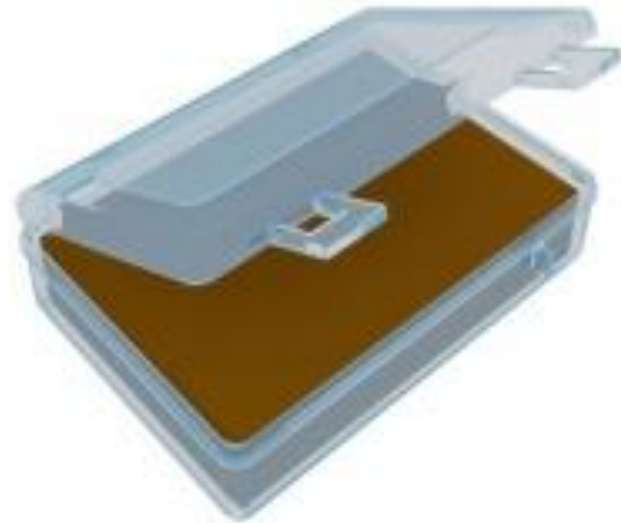
- ▶ Use:
 - For making Crown & Bridges
- ▶ Properties & Advantages:
 - It is sticky enough to easily adapt at the periphery
 - Enables accurate fit to the prepared cavity.
 - It creates the land of the crown or bridge .
- ▶ Packaging:
 - 250 gm x 4 = 1000 gm
 - 1000 gm x 1 = 1000 gm



Waxes for Crown, Bridges & Dentures:

COFFEE (CERAMIC) WAX:

- ▶ Use:
 - For making Crown & Bridges
- ▶ Properties & Advantages:
 - It is sticky enough to easily adapt at the periphery
 - Enables accurate fit to the prepared cavity.
 - It creates the land of the crown or bridge .
- ▶ Packaging:
 - 250 gm x 4 = 1000 gm



Waxes for Crown, Bridges & Dentures:

GREEN PATTERN WAX:

- ▶ Use:
 - For making Crown & Bridges
- ▶ Properties & Advantages:
 - It is sticky enough to easily adapt at the periphery.
 - Enables accurate fit to the prepared cavity.
 - It creates the land of the crown or bridge .
- ▶ Packaging:
 - $250 \text{ gm} \times 4 = 1000 \text{ gm}$
 - $1000 \text{ gm} \times 1 = 1000 \text{ gm}$



Waxes for Crown, Bridges & Dentures:

MARGIN WAX (Brown / Green / Red):

- ▶ Use:
 - To fill margin to avoid shrinkage
- ▶ Properties & Advantages:
 - It is sticky enough to easily adapt at the periphery`
 - Enables accurate fit to the prepared cavity.
- ▶ Packaging:
 - 250 gm X 4 = 1000 gm



Waxes for Crown, Bridges & Dentures:

MODELLING WAX:

- ▶ Use:
 - For denture works
- ▶ Properties & Advantages:
 - Foamable at slight temperature.
 - Sufficient Hard to Prevent occlusal changes
 - Can be delicately carved
 - Will not deform at mouth temperature
- ▶ Packaging:
 - 250 gm x 1 = 250 gm
 - 1000 gm x 1 = 1000 gm



Waxes for Crown, Bridges & Dentures:

ORANGE PATTERN WAX:

- ▶ Use:
 - For making Crown & Bridges
- ▶ Properties & Advantages:
 - It is sticky enough to easily adapt at the periphery
 - Enables accurate fit to the prepared cavity.
 - It creates the land of the crown or bridge .
- ▶ Packaging:
 - $250 \text{ gm} \times 4 = 1000 \text{ gm}$
 - $1000 \text{ gm} \times 1 = 1000 \text{ gm}$



Waxes for Crown, Bridges & Dentures:

RED PATTERN WAX:

- ▶ Use:
 - For making Crown & Bridges
- ▶ Properties & Advantages:
 - It is sticky enough to easily adapt at the periphery
 - Enables accurate fit to the prepared cavity.
 - It creates the land of the crown or bridge .
- ▶ Packaging:
 - $250 \text{ gm} \times 4 = 1000 \text{ gm}$
 - $1000 \text{ gm} \times 1 = 1000 \text{ gm}$



Waxes for Crown, Bridges & Dentures:

SPRUE WAX:

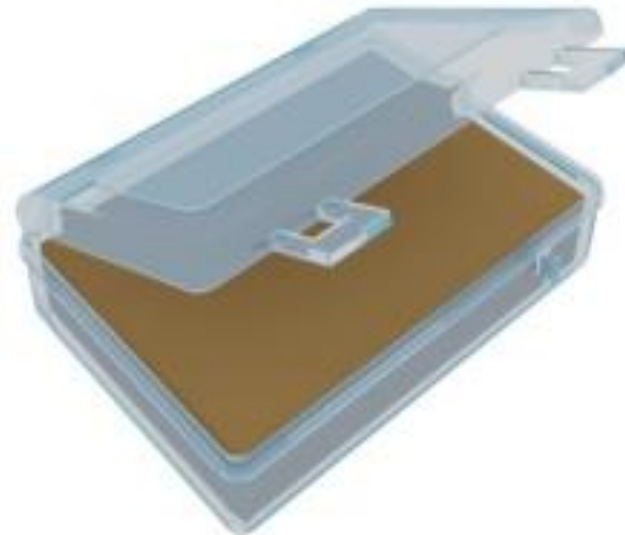
- ▶ Use:
 - Used as a pin to flow metal
- ▶ Properties & Advantages:
 - Stiff enough to hold the wax patterns and does not deform in shape.
- ▶ Packaging:
 - 500 gm X 1 Box = 500gm



Waxes for Crown, Bridges & Dentures:

STICKY WAX:

- ▶ Use:
 - To join long bridges to avoid bending
- ▶ Properties & Advantages:
 - It melts when heated and adheres to the surface onto which it is applied.
 - It holds the components prior to fixation and gives a clean burnout.
- ▶ Packaging:
 - 250 gm x 4 = 1000 gm



Waxes for Crown, Bridges & Dentures:

UNDERCUT WAX (Red / Green / Orange):

- ▶ Use:
 - Used to fill undercuts
- ▶ Properties & Advantages:
 - Maintains margin edges.
 - Enables accurate fit to the prepared cavity
 - Can be delicately carved
 - Will not deform at mouth temperature
- ▶ Packaging:
 - 250 gm x 4 = 1000 gm



Waxes for Crown, Bridges & Dentures:

YELLOW DIPPING WAX:

- ▶ Use:
 - Used for dipping jobs
- ▶ Properties & Advantages:
 - It is sticky enough to easily adapt at the periphery or edge of alginate impression by hand pressure.
 - Enables accurate fit to the prepared cavity.
 - It creates the land of the cast and preserves the outer portion of the cast.
- ▶ Packaging:
 - 250 gm x 4 = 1000 gm
 - 1000 gm X 1 = 1000 gm



Waxes for Crown, Bridges – Export Quality:

IVORY MOKUP / PATTERN WAX:

- ▶ Use:
 - For making crown and mukup jobs
- ▶ Properties & Advantages:
 - Enables accurate fit to the prepared cavity
 - Can be delicately carved
 - Will not deform at mouth temperature
- ▶ Packaging:
 - 250 gm x 4 = 1000 gm



Waxes for Crown, Bridges – Export Quality:

MILKY ORANGE WAX:

- ▶ Use:
 - Used for making Crown & Bridges
- ▶ Properties & Advantages:
 - Enables accurate fit to the prepared cavity
 - Can be delicately carved
 - Will not deform at mouth temperature
- ▶ Packaging:
 - 250 gm x 4 = 1000 gm



Waxes for Crown, Bridges – Export Quality:

SKY BLUE:

- ▶ Use:
 - Used for making Crown & Bridges
- ▶ Properties & Advantages:
 - Enables accurate fit to the prepared cavity
 - Can be delicately carved
 - Will not deform at mouth temperature
- ▶ Packaging:
 - 250 gm x 4 = 1000 gm



Waxes for Crown, Bridges – Export Quality:

WHITE MOKUP WAX:

- ▶ Use:
 - For moku jobs
- ▶ Properties & Advantages:
 - Enables accurate fit to the prepared cavity
 - Can be delicately carved
 - Will not deform at mouth temperature
- ▶ Packaging:
 - 250 gm x 4 = 1000 gm



Waxes used in Dentistry:

BEADING WAX:

- ▶ Use:
 - To bead the impression to get the land of the cast
- ▶ Properties & Advantages:
 - It is sticky enough to easily adapt at the periphery or edge of alginate impression by hand pressure.
 - It creates the land of the cast and preserves the outer portion of the cast.
- ▶ Packaging:
 - 12 strips X 1 Box



Waxes used in Dentistry:

BOXING WAX:

- ▶ Use:
 - To box the impression to get the required size
- ▶ Properties & Advantages:
 - It is soft and tacky for boxing in impressions..
- ▶ Packaging:
 - 6 sheets X 1 Box



Waxes used in Dentistry:

CARVING WAX:

- ▶ **Use:**
 - Used by medical colleges students
- ▶ **Properties & Advantages**
 - The Wax Blocks are easy to carve.
 - The most efficient feature of this wax block is sufficiently hard i.e. does not chip off at edges on applying pressure.
 - Cubes are bubble free.
- ▶ **Packing :**
 - 40 cubes x 1 box.



Waxes used in Dentistry:

GREEN CASTING SHEET:

- ▶ Use:
 - For casting jobs
- ▶ Properties & Advantages:
 - Sheets are sufficiently thin and can be adapted on the model without creating tension.
 - For exact and error free casting results
- ▶ Packaging:
 - 250 gm x 4 = 1000 gm



Waxes used in Dentistry:

SPACER WAX :

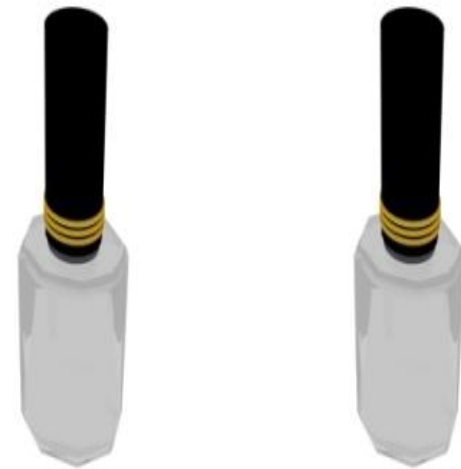
- ▶ Use:
 - Used to create space in denture work
- ▶ Properties & Advantages:
 - It is sticky enough to easily adapt at the periphery
 - Enables accurate fit to the prepared cavity.
- ▶ Packaging:
 - 25 sheets X 1 Box Upper
 - 25 sheets X 1 Box Lower



Materials used Before & After Wax Up:

CERAMIC SEPARATOR:

- ▶ Use:
 - To avoid dentin to stick on model
- ▶ Properties & Advantages:
 - Eliminates mess
 - Reduces inventory
 - Offers versatility of operation
 - Economical to use
- ▶ Packaging:
 - 35 ml X 2 bottles



Materials used Before & After Wax Up:

DEBUBBLIZER:

- ▶ Use:
 - To avoid bubbles
- ▶ Properties & Advantages:
 - It will not foam or bubble during vacuuming of investment in the ring.
 - Investment mix will flow uniformly and adapt to the wax surfaces giving the smoothest castings ever.
- ▶ Packaging:
 - 250 ml x 1 bottle
 - 500 ml x 1 cane
 - 1000 ml x 1 cane



Materials used Before & After Wax Up:

DIE HARDENER:

- ▶ Use:
 - Used for hardening the model
- ▶ Properties & Advantages:
 - It is sticky enough to easily adapt at the periphery or edge.
 - Enables accurate fit to the prepared job.
- ▶ Packaging:
 - 35 ml X 1 Hardener with 35 ml x 1 Diluter
 - 250 ml x 1 Hardener
 - 500 ml x 1 Hardener
 - 1000 ml x 1 Hardener



Hardener



Diluter

Materials used Before & After Wax Up:

DIE SPACER:

- ▶ Use:
 - To create space between Model & Crown
- ▶ Properties & Advantages:
 - It creates coating on the die for accurate restoration.
 - Enables accurate fit to the prepared cavity
- ▶ Packaging:
 - 35 ml X 1 Spacer with 35 ml x 1 Diluter
 - 250 ml x 1 Spacer
 - 500 ml x 1 Spacer



Spacer



Diluter

Materials used Before & After Wax Up:

WAX SEPARATOR:

- ▶ Use:
 - For separating wax from model
- ▶ Properties & Advantages:
 - Improves wax marginal accuracy
 - Reduces necessity to re-seal margins.
 - Reduces marginal shrinkage
 - Eliminates necessity for repeated applications
 - Increases waxing productivity
 - Eliminates mess
 - Reduces inventory
 - Offers versatility of operation
 - Economical to use
- ▶ Packaging:
 - 35 ml X 2
 - 500 ml x 1 cane
 - 1000 ml x 1 cane



Material Used after Metal Finish:

METAL OPAQUE (Shade No. – 10 / 11 / 12):

- ▶ Use:
 - Used for opaque purpose
- ▶ Properties & Advantages:
 - It is sticky enough to easily adapt
- ▶ Packaging:
 - 5 gm X 1
 - 25 gm x 1
 - 50 gm x 1



Contact Us:

J K INDUSTRIES

Near Pure Food Products, MIDC Shirgaon, Badlapur East,
Maharashtra, India – 421503

CONTACT NUMBERS

9890042799, 9323293385, 9221414004, 9049572046

EMAIL ID

info@jkindustries.org.in, jkdent@rediffmail.com

WEBSITE URL

www.jkindustries.org.in



THANK
YOU